

www.jeevanbaug.com



A Garden Called Life



1 & 2 BHK HAPPY HOMES
Gangapur-Satpur Link Road





A Garden Called Life

In Nashik's
Most Premium
Location

Comfortable &
Spacious Homes

Road Front
Property

Daily Needs At
One Hand Distance

Positive
Surroundings

Affordable
Living



Infinite Opportunities for Happiness!



214

Residential
Units

08

Towers

08

Wings

08

Floors

12

Commercial
Units

| LOCATION HIGHLIGHTS

Gangapur-Satpur Link Road, Beside Motiwala Homeopathy College



INDUSTRIES

- Jyoti Ceramic Industries
- Atlas Copco India
- Bosch Ltd
- ESDS Software Solution
- Dhumal Industries
- Sharda Motor Industries
- Mahindra Sona Limited
- Toshira Auto Industries



HEALTHCARE

- Motiwala Hospital
- Shri Guruji Hospital
- Aai Nursing Home
- Dhanvantri Hospital
- Dr. Gajare Hospital
- Gurukrupa Bagul Hospital



TOURISM

- Sula Vineyards
- Soma Vine Village
- Kashyapi Dam
- Gangapur Backwaters
- Gangapur Dam
- Trimbakeshwar Temple
- Brahmagiri Mountain
- Anjaneri Mountain
- Someshwar Water Fall
- Shree Balaji Temple
- Coin Museum



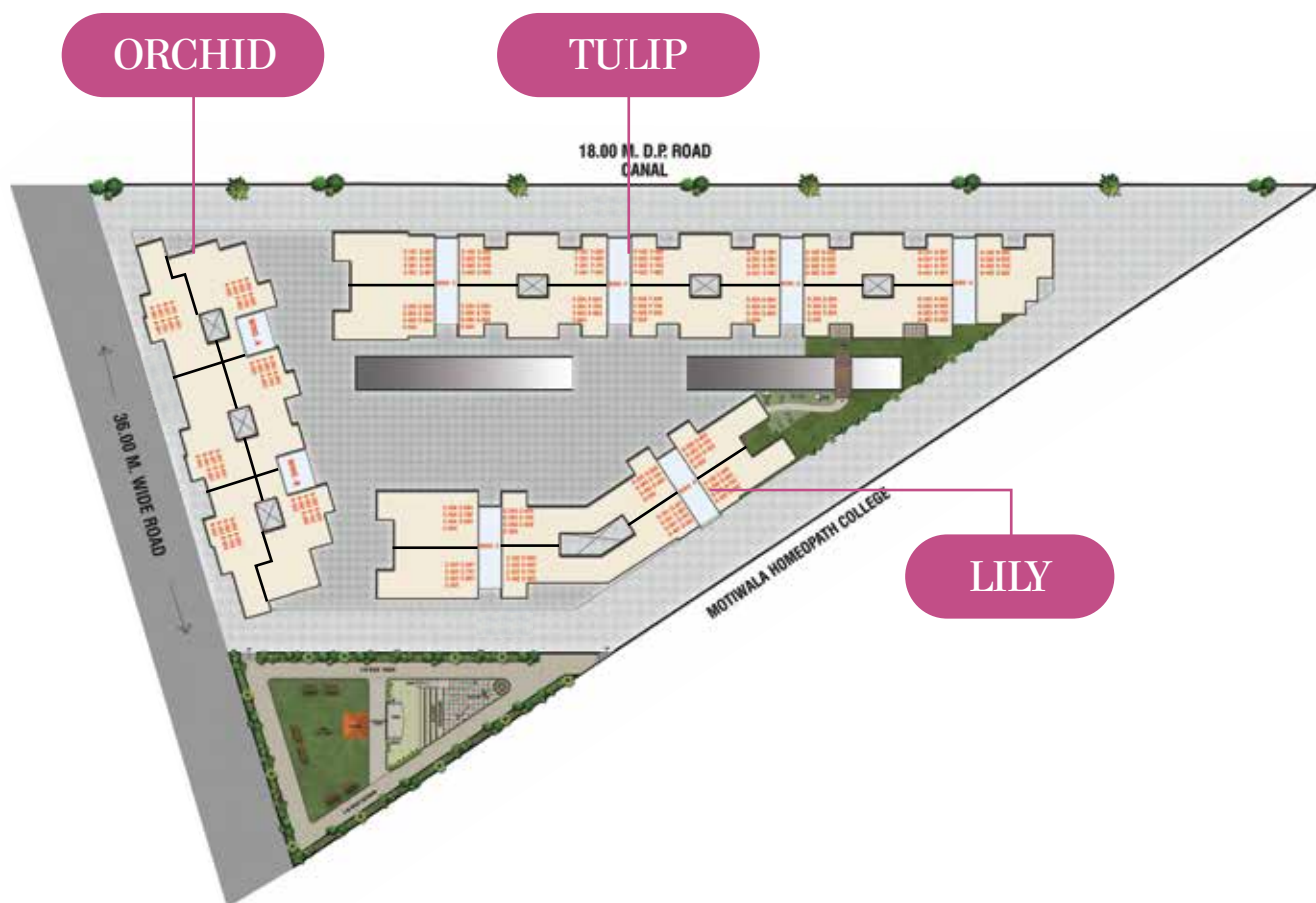
EDUCATION

- Motiwala Homoeopathic College
- MET's School of Architecture & Interior Designing
- J E Society's, Institute of Technology
- Fravashi International Academy
- Wisdom High International School
- Ebenezer International School
- Ashoka Universal School

|PROPOSED LAYOUT

SEGMENT	1 BHK	2 BHK	Commercial
CARPET AREA IN Sq. m.	40 Sq. m.	60 Sq. m.	35-60 Sq. m.





ROOF PLAN



WING A

WING B

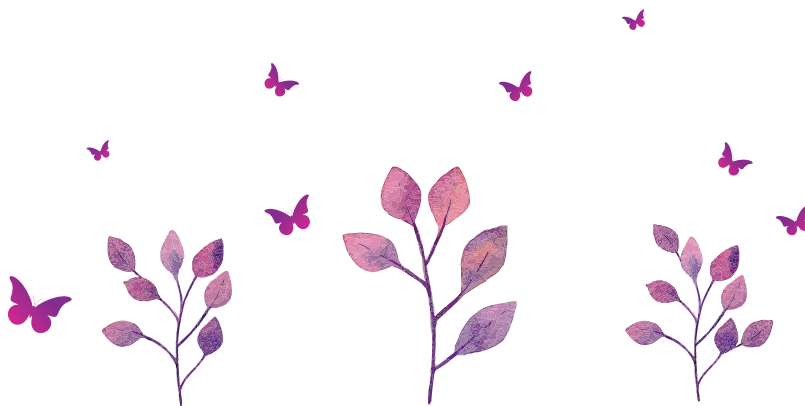


ORCHID | TYPICAL FLOOR PLAN





LILY | TYPICAL FLOOR PLAN



WING E

WING F



TULIP | TYPICAL FLOOR PLAN



WING G

WING H



TULIP | TYPICAL FLOOR PLAN



2 BHK Flat 202



2 BHK Flat 203



2 BHK Flat 201



1 BHK Flat 202



1 BHK Flat 202



| OFFERINGS



Spacious Homes,
Thoughtful Planning!



Branded Fixtures,
Quality Materials!



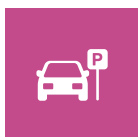
Affordable Pricing,
Comfortable Budget!



Proven Completion.
Committed Timelines!



Large Amenity Garden.
Kids Play Area!



Ample Parking.
Dedicated Allotment!



Daily requirements at
door steps



24 X 7 Security.
Value for Money!



Smart Investment.
Happy Living!



A Complete Lifestyle



| GALLERY







| Amenities

- Accupressure track
- Kids play area
- Amphitheatre
- Gazebo with party lawn
- Landscaping



Our Story

We are visionaries who want to manifest every bread earner's dream to have a castle of their own. Having carved a very niche customer segment as well, this project resonates with the basic fundamentals of essential and co-existing lifestyle.

It is often seen that great projects are raised by great teams! Jeevan Baug is indeed blessed in that regard with the engineering capabilities of **Er. Sushil Bagad** and architectural expertise of **Ar. Nilay Shah**.

Their experience of 12 & 10 years respectively along with their creative partnership has given birth to the idea of Jeevan Baug as a project that focuses on your comfort, your convenience, your security, and your peace of mind.



Er. Sushil Bagad



Ar. Nilay Shah



🦋 YOUR ARCHITECT 🦋

Ar. Vijay L. Patel
(Sankhla Associates)

🦋 YOUR STRUCTURAL CONSULTANT 🦋

Mr. Nitin Tekale
(Shree Consultants)

🦋 YOUR LEGAL ADVISOR 🦋

Adv. Manish Chindhade

🦋 YOUR HOME ADDRESS 🦋

Jeevan Baug

S. No. 66/7, Plot No. 1, Gangapur Shiwar,
Beside Motiwala Homeopathy College,
Gangapur-Satpur Link Road, Nashik

🦋 YOUR CONTACT 🦋

+91 7020208436
namaste@jeevanbaug.com
www.jeevanbaug.com

🦋 YOUR PROJECT IS APPROVED BY 🦋





॥ त्रिंशत्तनं न शाश्वतं मुल्याची विश्वासार्ह परंपरा ॥



A Garden Called Life

लोकाः समस्ता सुखिनो भवन्तु

May all beings everywhere be happy

**DIVINE
BUILDERS**



GAURI BUILDWELL PVT LTD

Member of



MARQUE STUDIO

A RERA REGISTERED PROJECT **MahaRERA No. P51600022403**

For More Information Visit www.mahareraonline.gov.in

Disclaimer : The content of the brochure is purely conceptual and serves no legal binding on the company. The developers reserve the right to amend the layout, amenities and various other specifications under any circumstances.